



სამართლიანი არჩევნებისა და დემოკრატიის საერთაშორისო საზოგადოება (ISFED)

საარჩევნო სიტიხებისა და მოყალ აყეTa პრიორიტების კვი ევა



კვლევის კრებულის გამოცემა დაფინანსებულია ევროკავშირის (EU) და გაერთიანებული ერების განვითარების პროგრამის (UNDP) მიერ, პროექტის „დიალოგისა და შესაძლებლობათა განვითარების ხელშეწყობა ეფექტური ეროვნული საარჩევნო პროცესებისათვის“ ფარგლებში. გამოცემის შინაარსზე პასუხისმგებელია მხოლოდ „სამართლიანი არჩევნებისა და დემოკრატიის საერთაშორისო საზოგადოება“ და არ გამოხატავს ევროკავშირისა და გაერთიანებული ერების განვითარების პროგრამის ოფიციალურ პოზიციას.

ISFED

samarTl iani arCevnebi sa da demokratiis saerTaSoriso sazogadoeba

proeqtis *"dial ogisa da Sesazl ebl obaTa ganviTarebis xel Sewoba efeqturi erovnul i saarCevno procesebisaTvis"* fargl ebSi, "samarTl iani arCevnebi sa da demokratiis saerTaSoriso sazogadoebam" (ISFED), evrokavSirisa da gaeros ganviTarebis programis finansuri mxardaWeriT ganaxorciel a kvl eva saarCevno sakiTxebisa da moqal aqeta prioritetebis Sesaxeb. proeqtis fargl ebSi 2009 wl idan 2011 wl is martis CaTvl iT periodSi ganxorciel da sxvadasxva saqmianoba, romel Ta mizani iyo saarCevno sakiTxebis Sesaxeb sazogadoebis cnobierebis gazrda.

saarCevno sakiTxebisa da moqal aqeta prioritetebis kvl evis sagans qveyanaSi mimdinare saarCevno procedurebisa da procesebisadmi amomrCvel Ta ganaTl ebis, ndobisa da prioritetebis dadgena warmoadgenda. ISFED-is mier ganxorciel ebul i kvl evis fargl ebSi, *savel e samuSaoebi* Catarda 2011 wl is 20-28 Tebervl is periodSi. K

SerCevis zoma: N=1101 dasrul ebul i interviu. general ur erTobl iobas warmoadgenda saqarTvel os 5 regionis, qal aqebisa da sofl ebis mosaxl eoba. kvl eva Catarda respondentTan saxl Si, pirispir intervius meTodiT, 18 wl is zeviT mosaxl eobaze.

ganawil eba: kvl evis areal ma moicva saqarTvel os 5 regionis (kaxeTi, aWara, qvemo qarTl i, samcxje-avaxeTi, samegrel o-zemo svaneTi) 5 qal aqi (gurj aani, xel vaCauri, axal cixe, marneul i, zugdidi) da amave municipal itetebis 15 sofl i (kardenaxi, vel iscixe, yitaani, gonio, sameba, maxvil auri, WaWaraq, sxvil isi, awyuri, maradisi, Saumiani, begliari, WiTawyari, kaxaTi, ingiri). sakvl evi sofl ebi Semdegi kriteriumebiT iqna SerCeul i: samoqal aqo ganaTl ebis dabal i done; mraval ricxovani mosaxl eoba; eTnikuri umciresobebiTa da izul ebiT gadaadgil ebul i pirebiT dasaxl ebul i adgil ebi.

ganawil ebaSi mocemul i SerCevis mocul obebi uzrunvel yofs, rom TiToeul wertil Si gamokvl eviT miRebul i *Sedegebis cdomil eba 95%-iani saimedobiT ar aRematebodes 5.4 %-s.* interviuerebs TiToeul SerCevis erTeul Si miecaT ganawil ebis Sesabamisi aTvl iTi wertil ebis raodenoba, intervius gansazRvrul i odenobiT. gamokvl evisaTvis gamoyenebul iqna *samsafexuriani SemTxveviTi kl asterul i SerCeva.*

sakvl evi sagani gul isxmobda:

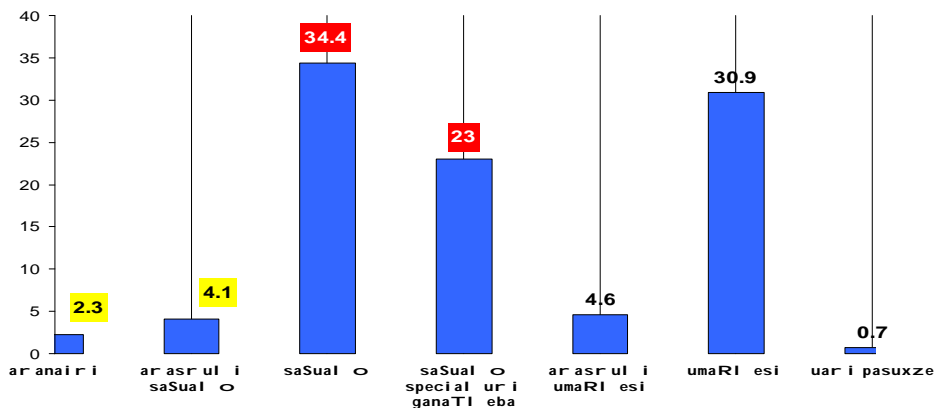
- moqal aqeta ganwyobebis, mol odinebis, Sefasebebis Seswavl as qveynis saarCevno garemos mimarT;
- rogor axasiaTeben moqal aqeebi saxel mwifos mmarTvel obis formas da rogoria maTi sandoobis done saarCevno procesebis mimarT;
- moqal aqeta damokidebul eba zogadad arCevnebis mimarT da im prioritetebis kvl eva, roml ebi c gansazRvraven maT arCevans;
- vin unda iyos pasuxismgebel i saarCevno kanonmdebl obis Sesaxeb moqal aqeta informirebul obaze;
- ramdenad myaria moqal aqeta Sexedul ebebi da ramdenad aris korel aciaSi maTi piradi ekonomikuri mdgomareoba saarCevno procesebisadmi maT ndobasTan;
- rogoria moqal aqeta TviTsefaseba da erkveian Tu ara saarCevno kanonmdebl obaSi;
- ramdenad cnobadebi arian sadamkvirvebl o organizaciebi da ra rol s aniWeben maT moqal aqeebi;
- rogoria moqal aqeta mol odini momaval i saarCevno garemos mimarT da a.S.

ISFED

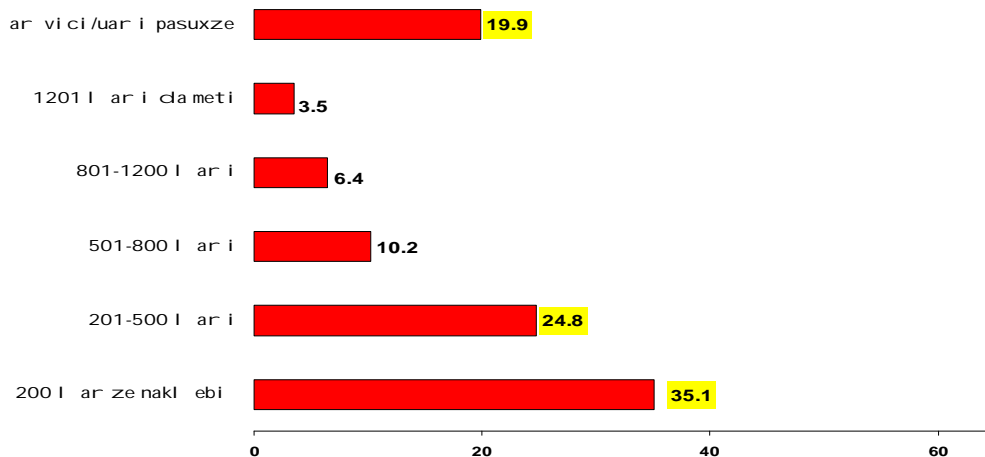
samarTl i ani arCevnebi sa da demokrati is saerTaSoriso sazogadoeba

kvlevis Sedegebma aCvena, rom gamokitxul Ta umetesoba saSual o da saSual o special uri ganaTl ebisaa. 6,4%-s ganaTl eba TiTqmis ar aqvs miRebul i, gamokitxul Ta TiTqmis mesamedi ki siRatakis zRvarzea.

gamokitxul Ta umetesoba saSual o da saSual o special uri ganaTl ebisaa, 6,4%-s ki ganaTl eba TiTqmis ar aqvs miRebul i (sruli SerCeva)



gamokitxul Ta TiTqmis mesamedi siRatakis zRvarzea
saSual oze dabal i Semosavl ebis mqone macxovrebels Ta maCvenebel i gamokitxul Ta TiTqmis 60%-s Seadgens

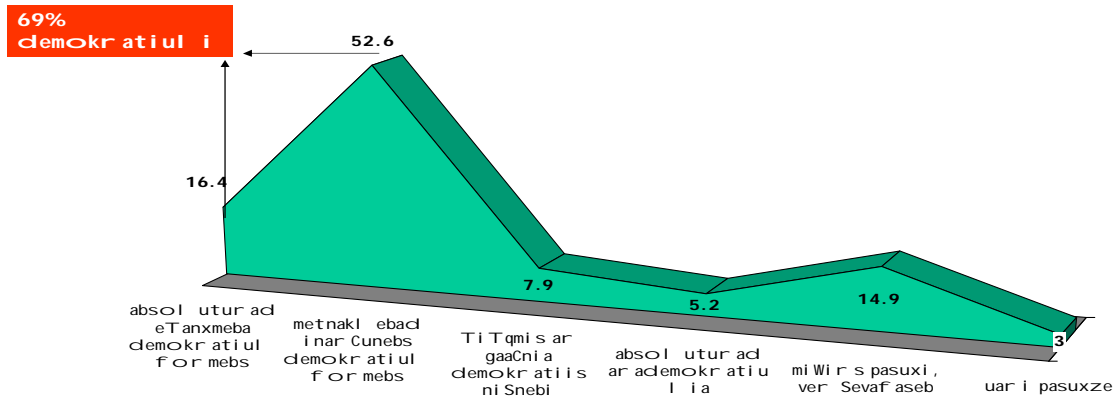


ISFED

samarTl i ani arCevnebi sa da demokratiis saerTasori so sazogadoeba

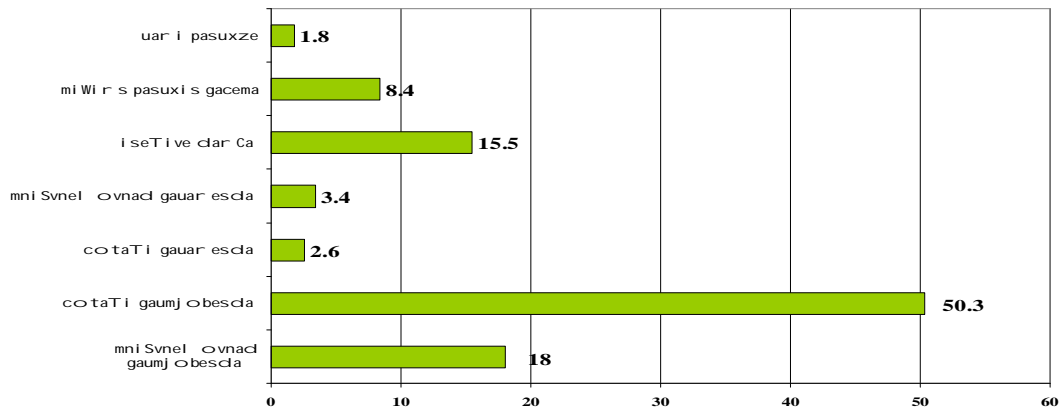
respondentTa daaxl oebiT 70% Cveni qveynis mmarTvel obis amJamindel formas demokratiul adafasebs.

respondentTa TiTqmis 70% Cveni qveynis mmarTvel obis amJamindel formas demokratiul adafasebs. (sr ul i Ser Ceva)



TiTqmis 70% ambobs, rom 2008 wl is arCevnebis Semdeg, Cvens qveyanaSi saarCevno garemo gaumj obesebul ia. Semosavl ebis Wril Si 2008 wl is arCevnebis Semdeg saarCevno garemos Sefaseba dadebiTi SefasebebiT gamoi xata.

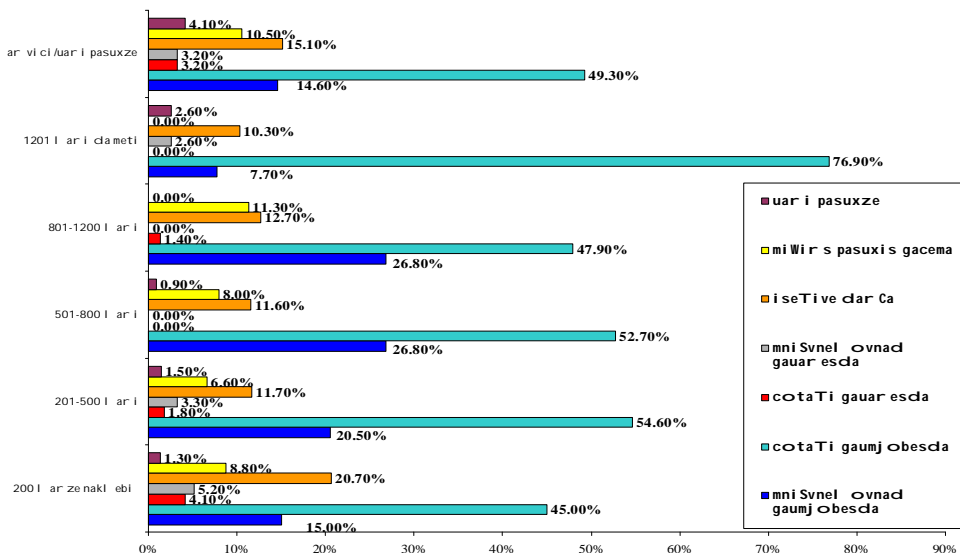
respondentTa TiTqmis 70% ambobs, rom 2008 wl is arCevnebis Semdeg, Cvens qveyanaSi saarCevno garemo gaumj obesebul ia. (sr ul i Ser Ceva)



ISFED

samarTl i ani arCevnebi sa da demokrati is saerTaSor i so sazogadoeba

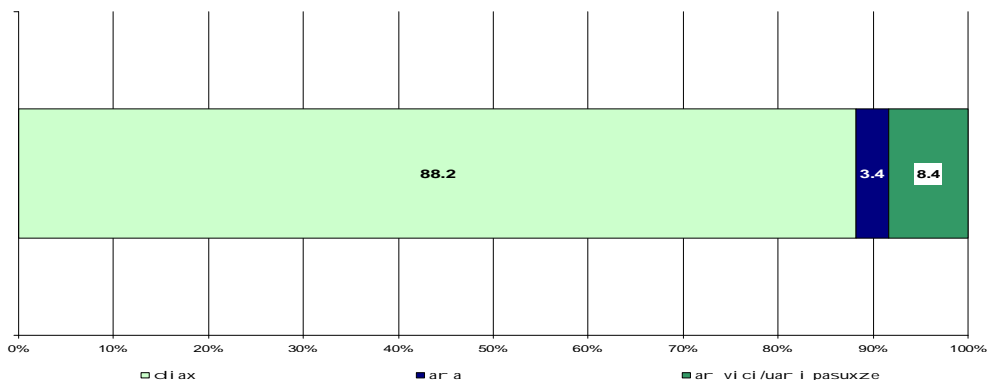
Semosavl ebis Wril Si 2008 wl i s arCevnebi s Semdeg saarCevno gar emos Sef aseba dadebi Ti maCvenebl ebi T gamoi xata
(sr ul i Ser Ceva)



Semosavl ebis ranJirebis Sedarebam (*imis gaviTval iswinebiT, rom gamokiTxul i regione bis TiTqmis naxevarze meti saSual oze dabal i Semosavl ebis mqone oj axia*), qveynis mmarTvel obis demokratiul obis SefasebasTan mimarTebsaSi aseve ar aCvena mkveTri sxvaoba, rac mi aniSnebs Semosavl ebis miuxedavad, mi marTebebis erTgvarovnebase.

Semosavl ebis Wril i kiTxvasTan – **saWiroa, Tu ara damkvirvebl ebis daswreba arCevnebze 88.2%** dadebiTad upasuxa, rac kvl av mimarTebebis erTgvarovnebase da Semosavl ebis miuxedavad saarCevno garemosadmi amomrCvel Ta undobl obaze miuTitebs. Sesabamisad, xuTi sxvadasxva Semosavl ebis jgufis maCvenebl ebSi erTnairi damokidebul eba gamoi xata – xuTive jgufi mxars uWers arCevnebze damkvirvebl ebis daswrebi aucil ebl obas da asaxel ebs sxvadasxva mi zezs:

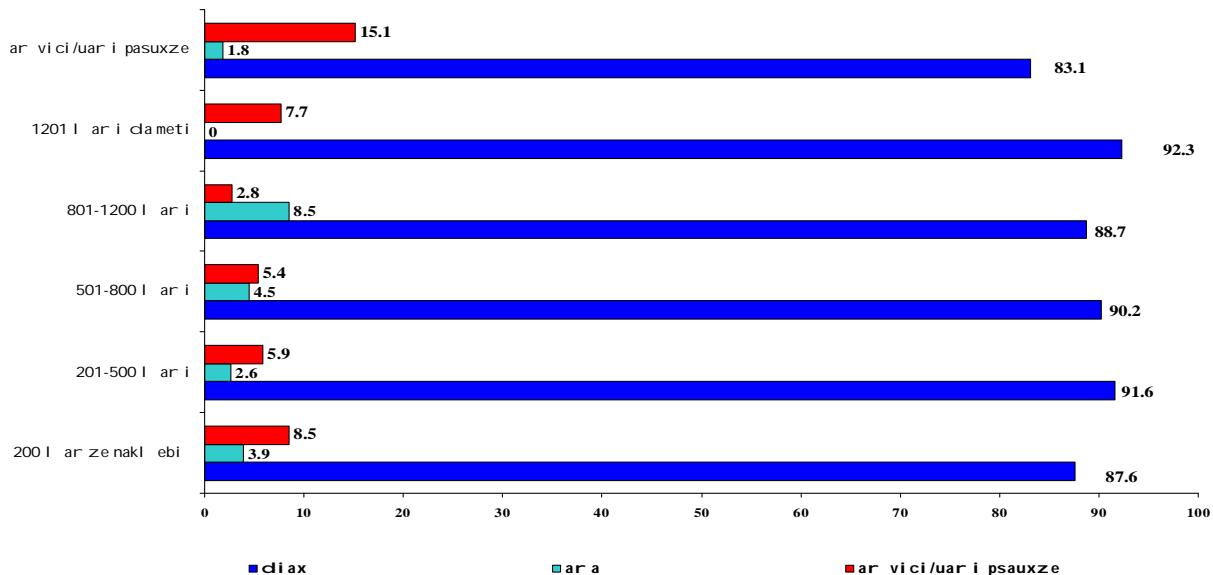
88.2% mi i Cnevs rom, arCevnebze damkvirvebl ebis daswreba saWiroa
(sr ul i Ser Ceva)



ISFED

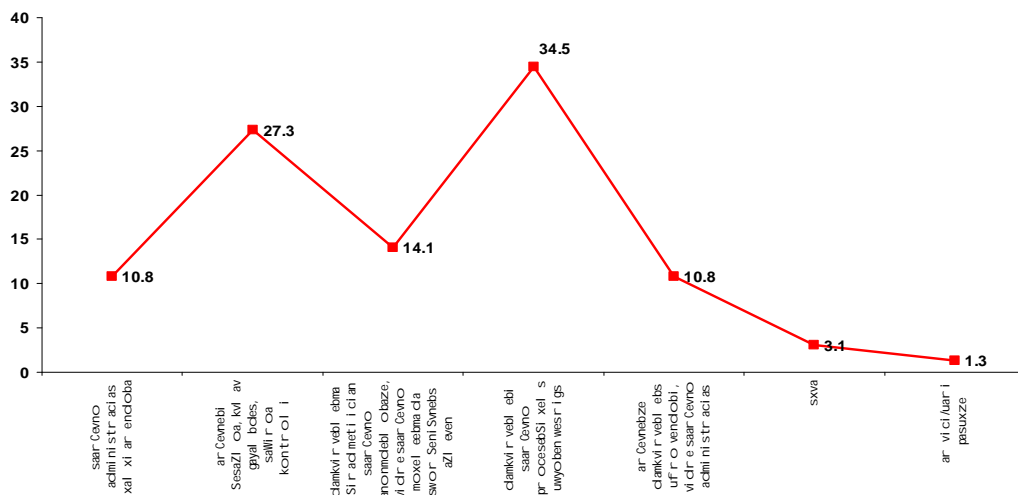
samarTli ani arCevnebi sa da demokratiis saerTasori so sazogadoeba

Semosavl ebis ranjirebis Wriili kiTxvasTan – saWiroa, Tu aradankvirvelebis claswreba arCevneზე კვლავ მიმართები სერთვაროვნეზე მიუტიტებს და Semosavl ebis მიუხედავად საარცვნივარემოსაძმი ამომრცელ Ta undობლ obas usvams xazs
(სრული სერცვა)



რატომ არის საWრო არცვნივარეზე დანკვირველები არსებობა (88.8% - დან)

რატომ არის საWრო არცვნივარეზე დანკვირველები არსებობა
(მატგან, ვინც უპასუხა, რომ დანკვირველები სდასრება საWროა – 88.8%)



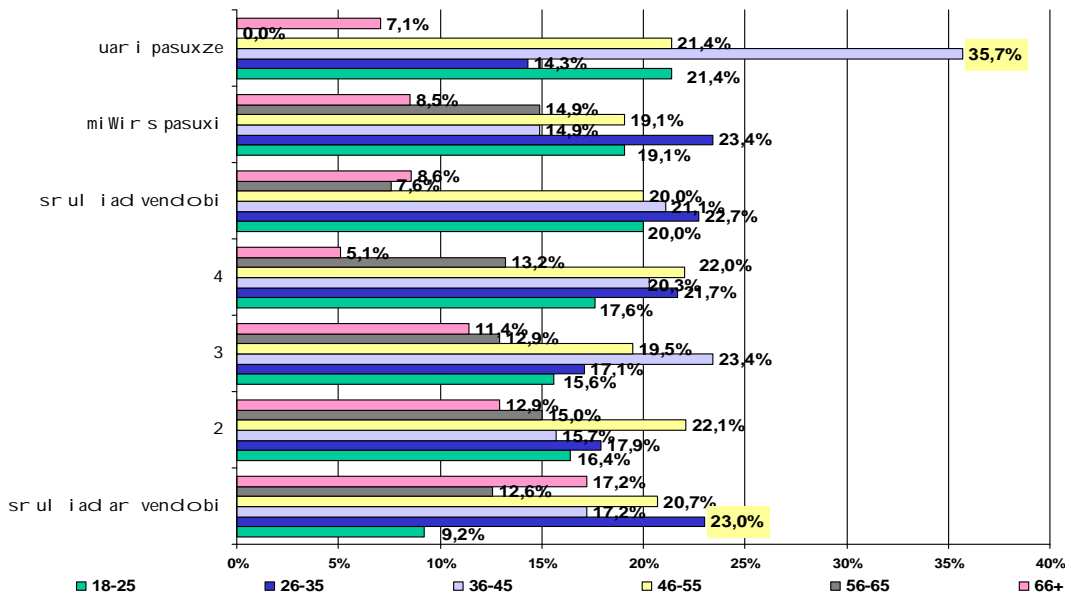
ISFED

samarTI i ani arCevnebi sa da demokrati is saerTaSoriso sazogadoeba

qveyanaSi Catar ebul i arCevnebis Sedegebtan mimarTebaSi, 36-45 asakobrivi jgufis gamokiTxul ebidan 35.7% uars ambobs pasuxze, Seafasos arCevnebis Sedegebis sandooba, yvel aze maRal i procentiT undobl oba ki 26-35 wl is asakobrivi jgufSi gamovlinda - 23%. yvel aze maRal i maCvenebl iT undobl obas azerbaijanel i da somexi gamokiTxul ebi amJRavneben.

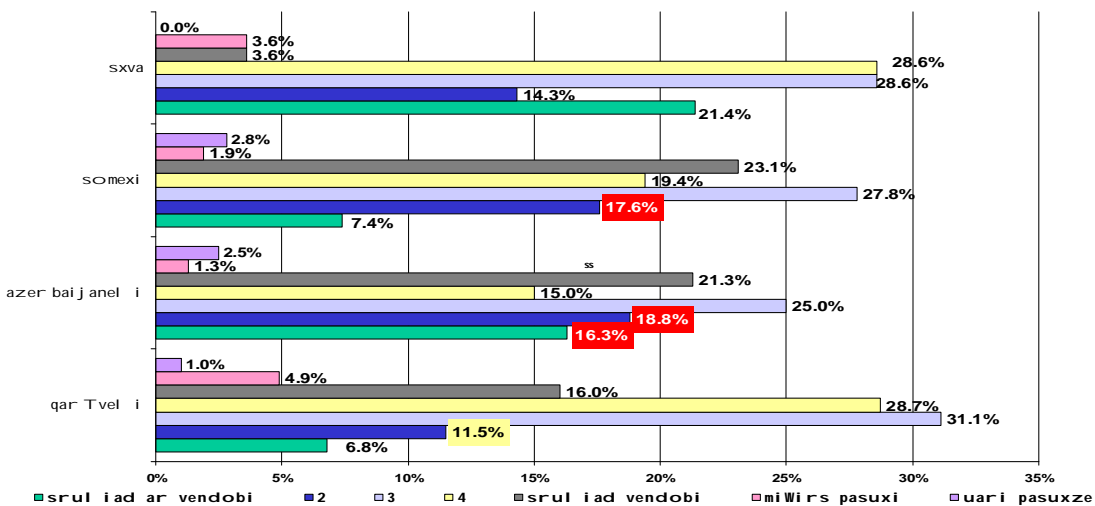
qveyanaSi Catar ebul i arCevnebis Sedegebtan mimarTebaSi, 36-45 asakobrivi jgufis gamokiTxul ebidan 35.7% uars ambobs pasuxze, Seafasos arCevnebis Sedegebis sandooba, yvel aze maRal i procentiT undobl oba ki 26-35 wl is asakobrivi jgufSi gamovlinda

(srul i SerCeva)



qveyanaSi Catar ebul i arCevnebis Sedegebtan mimarTebaSi, yvel aze maRal i maCvenebl iT undobl obas azerbaijanel i da somexi gamokiTxul ebi amJRavneben

(srul i SerCeva)



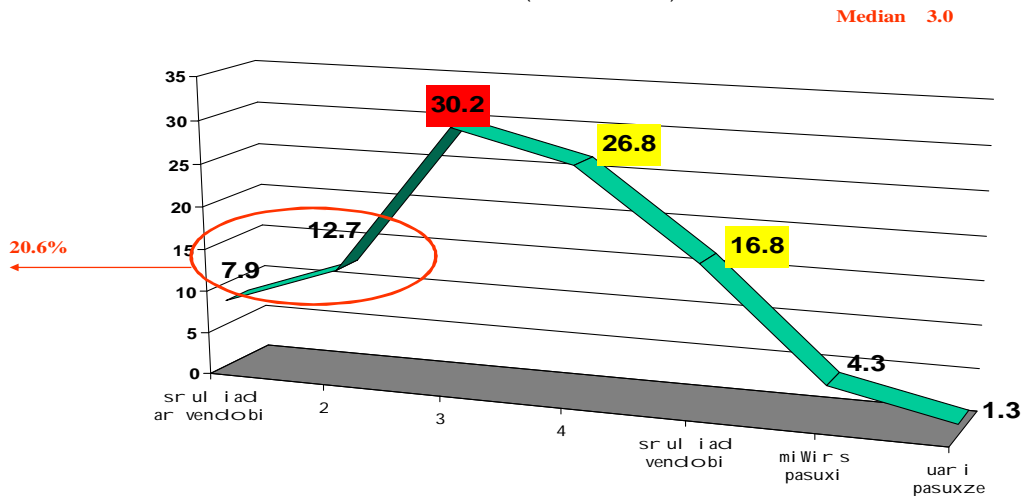
ISFED

ISFED

samarTl i ani arCevnebi sa da demokratiis saerTaSoriso sazogadoeba

amave dros, qveyanaSi Catarebul i arCevnebis SedegebTan mimarTebaSi, gamokiTxul Ta mxol od 20.6% ambobs, rom ar endoba Sedegebs, xol o 43.6% arCevnebis Sedegebs ndobiT eki deba. mniSvnel ovania im respondentTa procentul i maCvenebl i, roml ebiC Sual edur pozicias ikaveben (30.2%), radgan ndobis sakiTxTan mimarTebaSi es Sefaseba uaryofiTi muxtis matarebel icaa, rac mianiSnebs, rom gamokiTxul Ta es wil i bol omde ar iziarebs arCevnebis Sedegebis sandoobas (srul i SerCeva).

qveyanaSi Catarebul i arCevnebis SedegebTan mimarTebaSi, gamokiTxul Ta mxol od 20.6% ambobs, rom ar endoba Sedegebs, xol o 43.6% arCevnebis Sedegebs ndobiT eki deba, mniSvnel ovania im respondentTa procentul i maCvenebl i, roml ebiC Sual edur pozicias ikaveben (30.2%), radgan ndobis sakiTxTan mimarTebaSi es Sefaseba uaryofiTi muxtis matarebel icaa, rac mianiSnebs, rom gamokiTxul Ta es wil i bol omde ar iziarebs arCevnebis Sedegebis sandoobas (srul i SerCeva)



SesamCnevi xdeba, rom TiTqos garkveul Seusabamobas aqvs adgili, - gamokiTxul Ta ganwyobebi da damokidebul ebebi ambivalenturi xasiaTisaa - im dros, rodesac gamokiTxul Ta 70% saxel mwifos marTvis formebs demokratiul ad afasebs, 88.2% saarCevno procesebisa da arCevnebis Sedegebis mimarT undobl obas gamoxatavs. savaraudod aseTi wi naaRmdegobebi sxvadasxva procesebis ganvitarebis produqtad unda miviCni oT: dadebiTi - saxel mwifos mier gatarebul i sxvadasxva mimarTul ebis reformebi, saerTo sacxovrebel i fonis gaumj obeseba (gzebi, deni, gazi wyal momarageba), demokratiis gziT msvl el obis da aRmSenebl obis propaganda da a.S., uaryofiTi - 2003 wl is revl uciis Semdgom, zemoT CamoTvl il cvl il ebebs fonad gasdevda mra val i emociuri katakl izma: revol uciis Sedegad ukeTesi momaval is imedi, Semdgomi imedgacrueba, rogorc xel isufl ebis, aseve opoziciuri partieb is mimarT, iseTi cvl il ebebis ar arseboba, romel ic dadebiT, xel Sesaxeb asaxvas hpovebda konkretul i ojaxis social ur-ekonomikur mdgomareobaze, yvel aferma aman ki safuZvel i Seqmna nihilizmis da ormagi ganwyobebis ganvitarebis aTv is. vfiqrobT es sakiTxebi Semdgomi kvl evis sagania, romel ic Rrma Seswavl as moiTxovs.

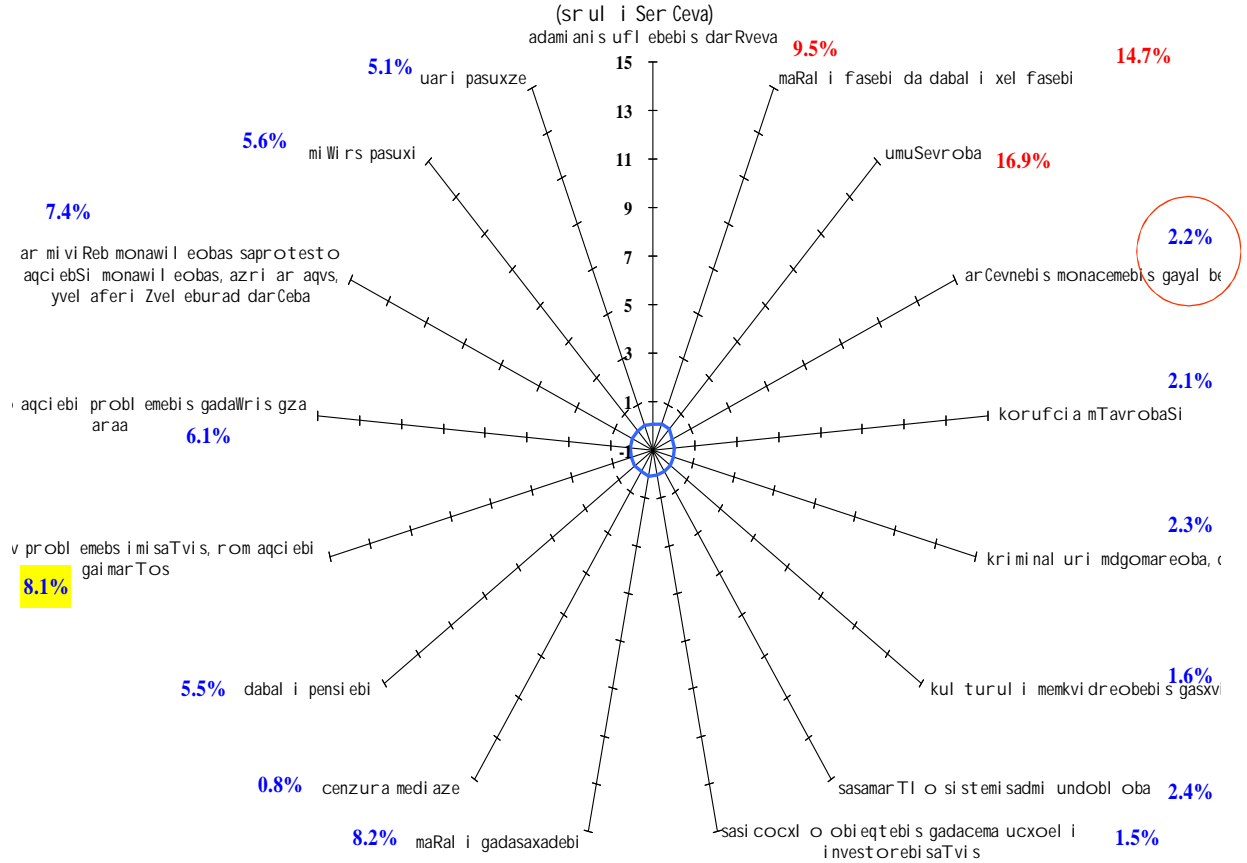
anal ogiur simptomebs Cveni kvl evis Semdgomi maCvenebl ebiC aRwers:

miiReben, Tu ara monawil eobas saprotesto aqciebSi da Tu miiReben ra mizezebis gamo, respondentTa mxol od 8.1% acxadebs, rom saprotesto aqciebis gamarTvis mizezebs ver xedavs. potenciurad gamokiTxul ebis umravl esoba saprotesto aqciebSi monawil eobis miRebas ar gamoricxavs, magram Sevl il ia Tavad aqciebSi monawil eobis Sinaarsi, politikuri aqcentebi Sevl il ia social urit.

ISFED

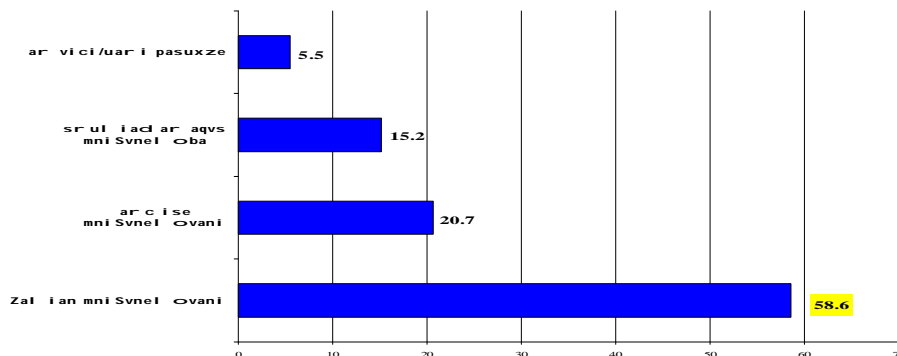
samarTI i ani arCevnebi sa da demokrati is saerTaSoriso sazogadoeba

mi i Reben, Tu ar a monawil eobas saprotesto aqci ebSi da Tu mi i Reben ra mi zezebi s gamo.
r espondentTa mxol od 8.1% acxadebs, r om saprotesto aqci ebis gamar Tvis mi zezebs ver xedavs.
gamoki Txul Tagan, vi nc mosal odnel ia, r om monawil eobas mi i Rebs aqci ebSi, mTavar aqcents social ur
probl eme bzeakeTebS, ar Cevnebi s monacemebi s gayal beba sagr Znobl ad dabal i maCvenebl iT gamoi xata



respondentebis umetesoba aRni Snavs, rom arCevnebi s monawil eobis mi Reba piradad mi sTvis Zal ian mni Snel ovania (srul i SerCeva)

r espondentebis umetesoba aRni Snavs, r om ar Cevnebi s monawil eobis mi Reba piradad mi sTvis Zal ian mni Snel ovania (sr ul i Ser Ceva)

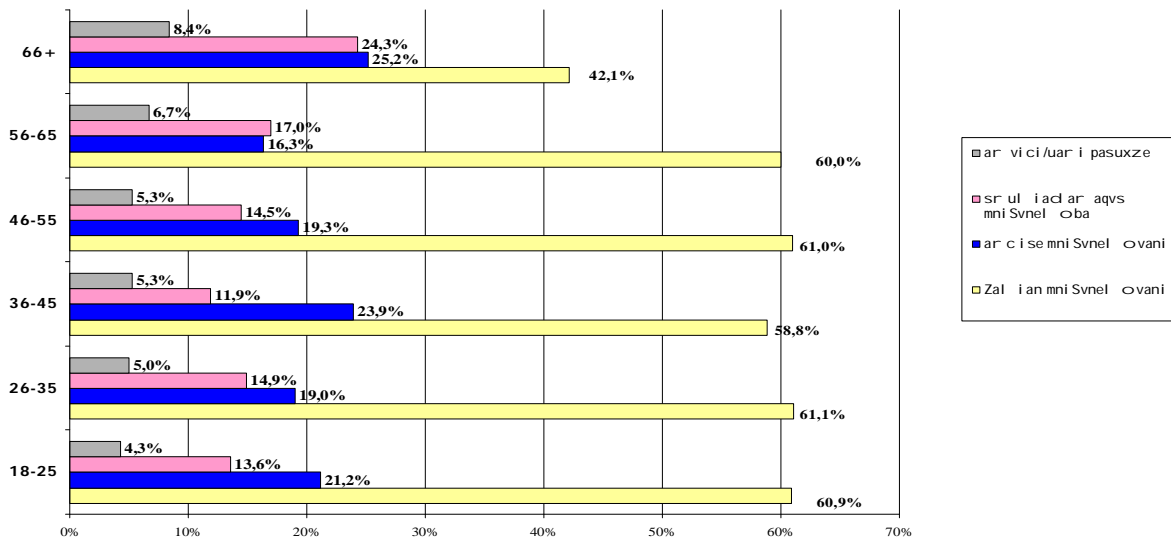


ISFED

samarTli ani arcvebisa da demokratiis saertasoris sazogadoeba

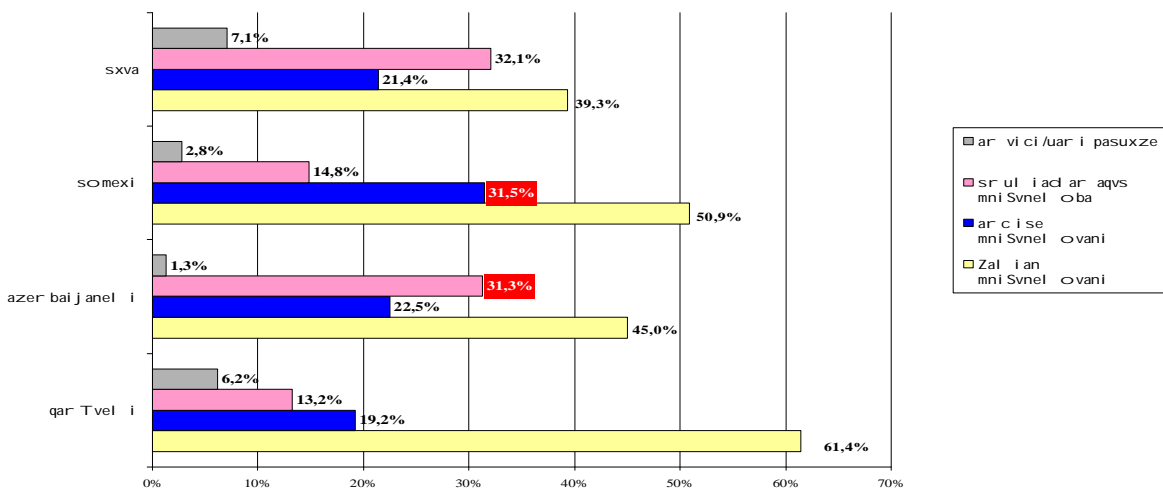
yovel asakobriv Wril Si, respondentebis umetesoba aRniSnavs, rom arcvebSi monawil eobis miReba piradad misTvis Zal ian mniSvnel ovania – saSual od 60%.

yovel asakobriv Wril Si, respondentebis umetesoba aRniSnavs, rom arcvebSi monawil eobis miReba piradad misTvis Zal ian mniSvnel ovania – saSual od 60%
(sruli SerCeva)



erovnebaTa Wril Si, respondentebis umetesoba aRniSnavs, rom arcvebSi monawil eobis miReba piradad misTvis Zal ian mniSvnel ovania, daxasiaTeba "arcise mniSvnelovani" maRali macvnebl iT eTnikurad somex gamokitxul ebSi aRiniSna, xolo "sruliadaraqvs mniSvneloba" yvelaze maRali macvnebl iT azerbaijanul eTnikur jgufSi gamoixata.

erovnebis Wril Si, respondentebis umetesoba aRniSnavs, rom arcvebSi monawil eobis miReba piradad misTvis Zal ian mniSvnel ovania, daxasiaTeba "arcise mniSvnelovani" maRali macvnebl iT somex gamokitxul ebSi aRiniSna, xolo "sruliadaraqvs mniSvneloba" yvelaze maRali macvnebl iT azerbaijanul eTnikur jgufSi aRiniSna
(sruli SerCeva)



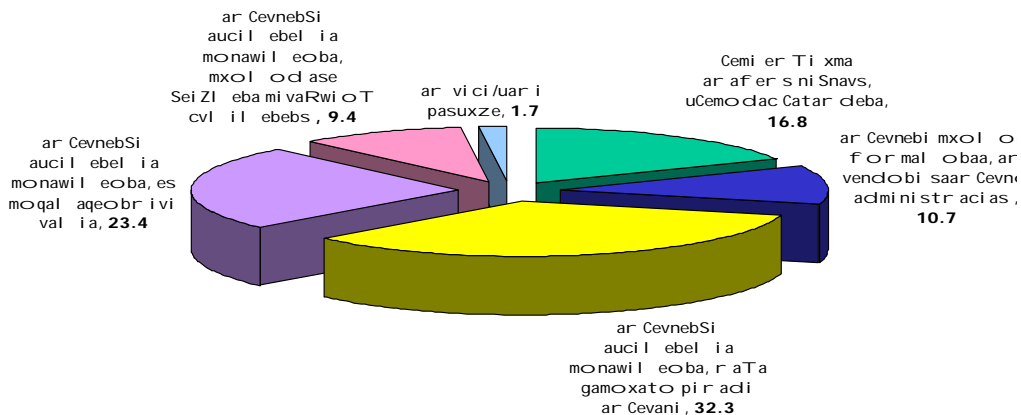
ISFED

samarTl i ani arCevnebi sa da demokrati is saerTaSoriso sazogadoeba

Tu ratomaa mniSvnel ovani/umniSvnel o arCevnebsi monawil eobis miReba, saarCevno administraciisadmi undobl obis maCvenebl iT mxol od 10% aRiniSna, iTiqmis 17%-i ki nihil istur damokidebul ebas amJRavnebs.

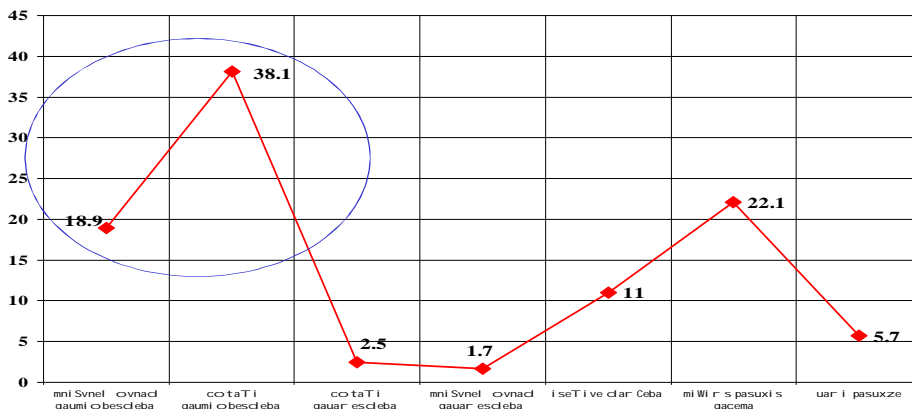
gamokiTxul TaSef asebebi – ratomaa maTTvis mniSvnel ovani/umniSvnel o arCevnebsi monawil eobis miReba, saarCevno administraciisadmi undobl obis maCvenebl iT 10% aRiniSna, xol o 17%-i ki nihil istur damokidebul ebas amJRavnebs

(maTgan, vinctambobs, rom mniSvnel saarCevnebsi monawil eobis miReba mniSvnel ovani a, an umniSvnel o)



gamokiTxul Ta 49% Tvl is, rom saarCevno garemo uaxl oes or wel iwadSi gaumj obesdeba (sruli SerCeva), aseve Semosavl ebis Wril Si gamokiTxul Ta mol odini, rom saarCevno garemo gaumj obesdeba, umeteswil ad optimistur xasiaTs atarebs, magram daaxl oebiT mesameds uWirs prognozi reba.

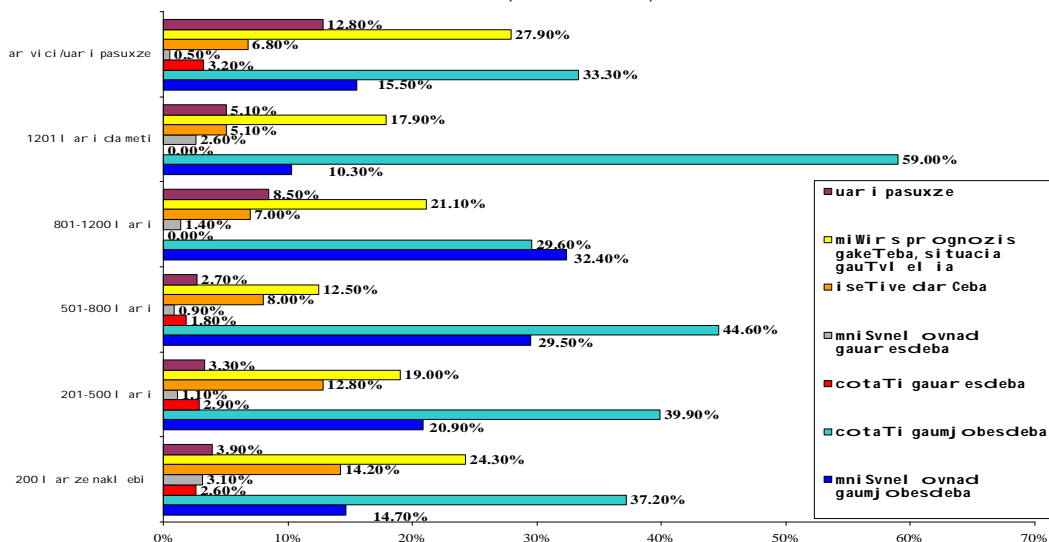
gamokiTxul Ta 49% Tvl is, rom saarCevno garemo uaxl oes or wel iwadSi gaumj obesdeba (sruli SerCeva)



ISFED

samarTl i ani arCevnebi sa da demokrati is saerTaSoriso sazogadoeba

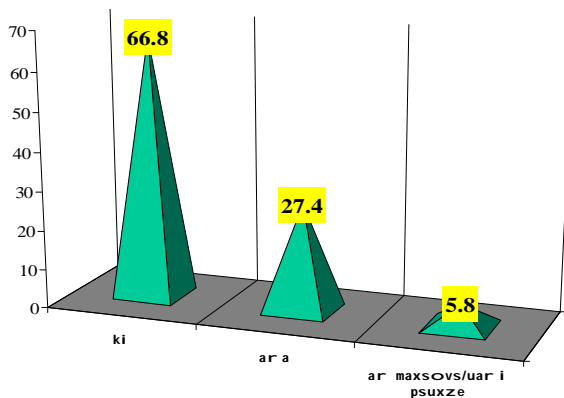
SemoSavl ebis Wril Si gamoki Txul Tamol odini, rom saar Cevno gar emo gaumj obesdeba, umeteswil ad optimistur xasiaTs atar ebs, magram daaxl oebi T mesameds uWirs pr ognozir eba
(sr ul i Ser Ceva)



miRes, Tu ara monawil eoba bol o arCevnebsi, asakobrivi Wril i.

TiToeul asakobrivi j gufSi arCevnebsi monawil eobis miRebis aqtivoba maRal i maCvenebl ebi T gamoixata – saSual od 65%-ze zevi T.

miRes Tu ara monawil eoba 2010 wl is adgil obrivar Cevnebsi
(sr ul i Ser Ceva)

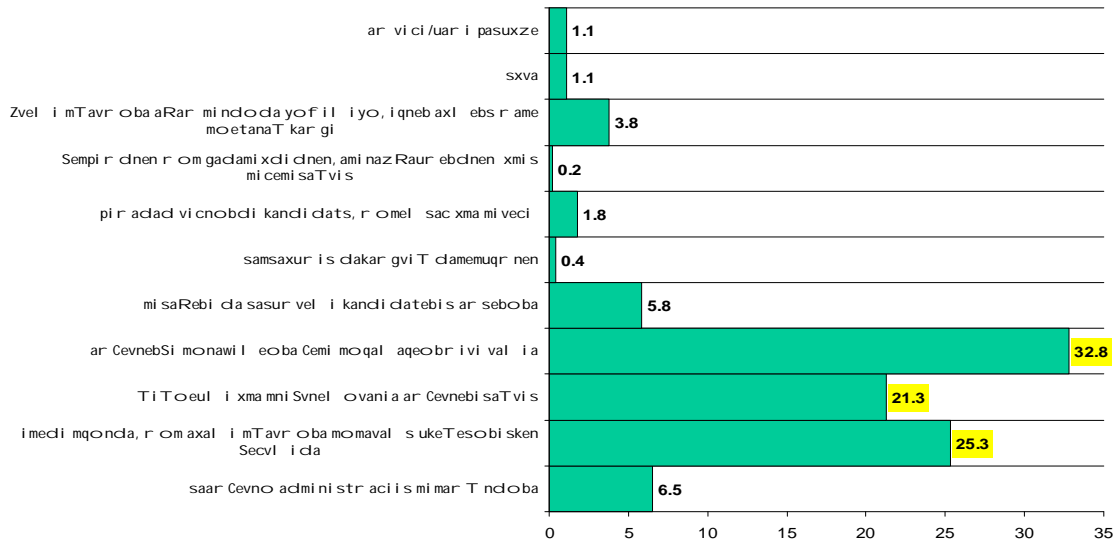


ISFED

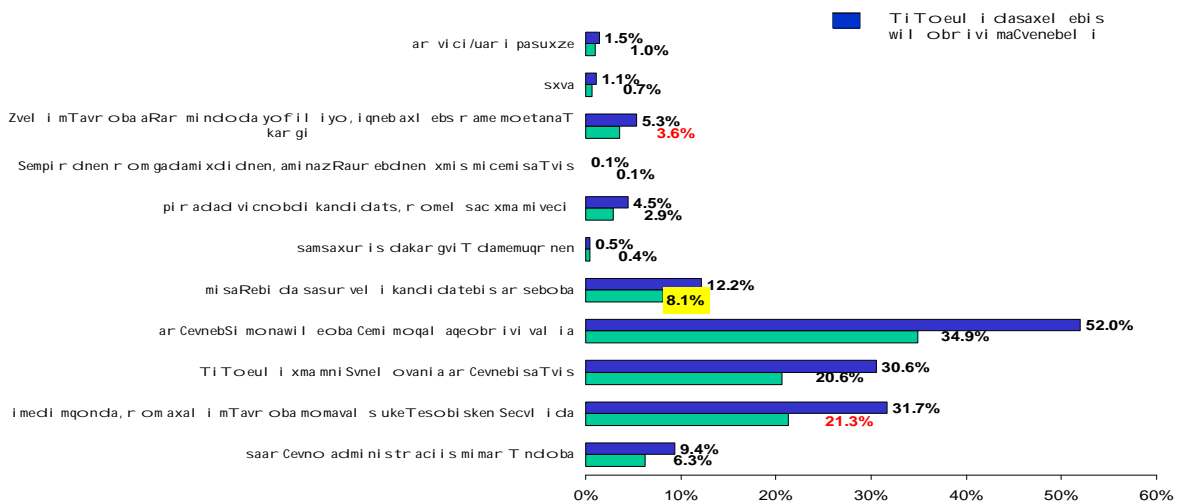
samarTl i ani arCevnebi sa da demokrati is saerTaSoriso sazogadoeba

ratom miRes 2008 wl is arCevnebiSi monawil eoba (50.7%-dan)

ratom miRes 2008 wl is arCevnebiSi monawil eoba
(maTganvi nc mi i Ro monawil eoba-50.7%)



2010 wl is arCevnebiSi monawil eoba mi saRebi cla sasur vel i kandi dats gamoxol od 8.1% mi i Ro, saar Cevno adm ini str aci is adm i ndobas mxol od 6.3% gamoxatavs, gamoki Txul Ta Ti Tqmis 25% ki cvl il ebebsel oda
(maTganvi nc mi i Ro monawil eoba-66.8%)



rogorc cxril ebidan Cans, gamokiTxul Ta ganwyobebi 2008 da 2010 wl ebSi Catarebul i arCevnebi s mimarT daaxl oebi T erTnairia, orive SemTxvevaSi momavl is ukeTesobisaken cvl il ebis mol odini daaxl oebi T erTnairi maCvenebl iT gamoixata.

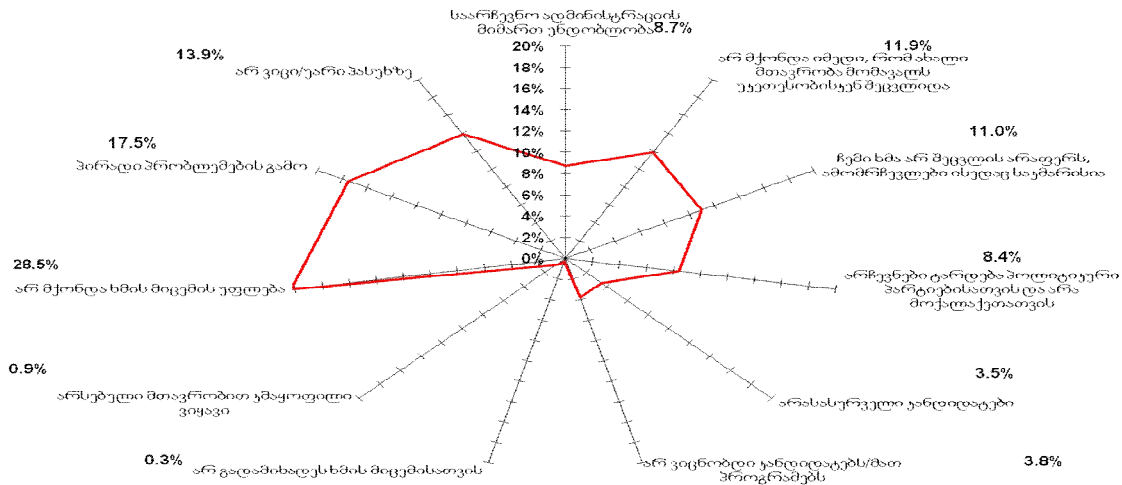
ISFED

samarTliani arCevnibisa da demokratiis saerTasoris sazogadoeba

savaraudoa, rom am regionebsi arCevnibsi monawilebis miRebis mniSvel obas mosaxleoba bol omde ver acnobierebs, akl ia informirebul oba da misi, rogorc amomrCevl is qceva mxol od ori ZiriTadi faqtoriT ganisazRvreba: 1. moqal aqobrivi vali (rac Sesazl oa saarCevno kampaniebis propogandis Sedegia) da 2. momavlis ukeTesobisaken cvlilebis mol odini (TviTgadarCenis instinqturi gamoxatul eba).

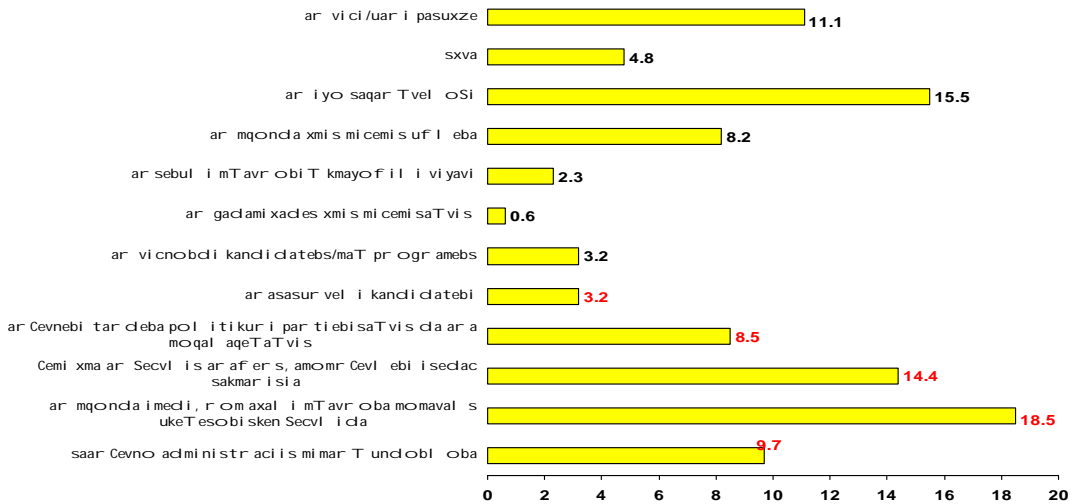
ratom ar miRes 2008 wl is arCevnibsi monawileoba (28.5%-dan)

ratomar miRes 2008 wl is arCevnibsi monawileoba – 20.5% ambobs, rom ar hqonda ufleba monawileobami eRo arCevnibsi (matganvi sacar miuRia monawileoba-28.5%)



ratom ar miRes 2010 wl is arCevnibsi monawileoba (27.4%-dan)

ratomar miRes 2010 wl is arCevnibsi monawileoba-gamokiTxul Tamravlesobis pasuxebis sixsirebi arCevnibsadmi nihilistur damokidebul ebas da undobl obas gamoxatavs (matganvinar miuRia monawileoba-27.4%)



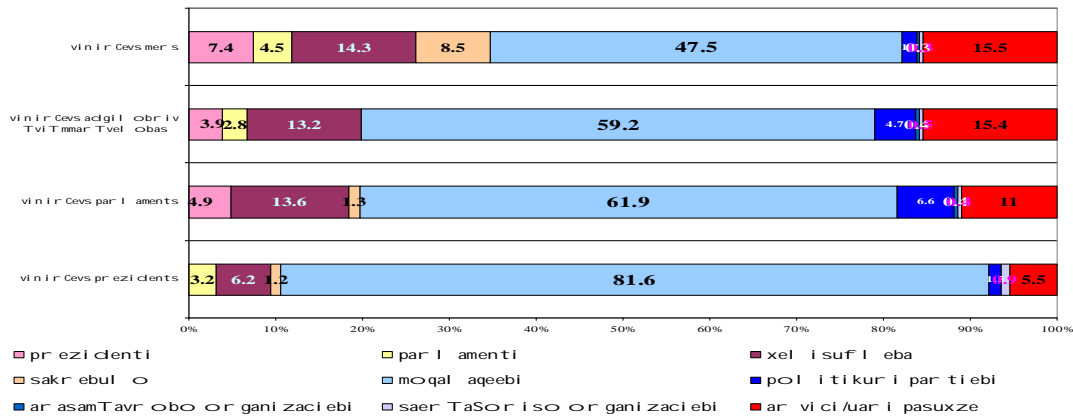
ISFED

samarTl i ani arCevnebi sa da demokrati is saerTaSoriso sazogadoeba

2008 wl is arCevnebiSi monawil eoba 20.3% ver mi iRo radgan ar hqonda xmis micemis ufl eba (am regionebsi devnil ebi kompaqturad arian Casaxl ebul ni), rac 2010 wl isTvis aRar aRiniSneba aseTi sixSiriT, rac miuTiTebS, rom 2008 wl isTvis devnil Ta registracia saarCevno siebSi j er ki dev ar iyo mowesrigebul i.

gamokiTxul Ta umetesobam icis rom arCevnebiSi mTavar rol s moqal aqeebi TamaSoben, magram Sereuli pasuxebis simravle miuTiTebS, rom gamokiTxul ebiS codna bevrad met informirebul obas moiTxovs (sruli SerCeva), vidre isini am sakiTxTan mimarTebsaSi akeTeben TviTsefasebas.

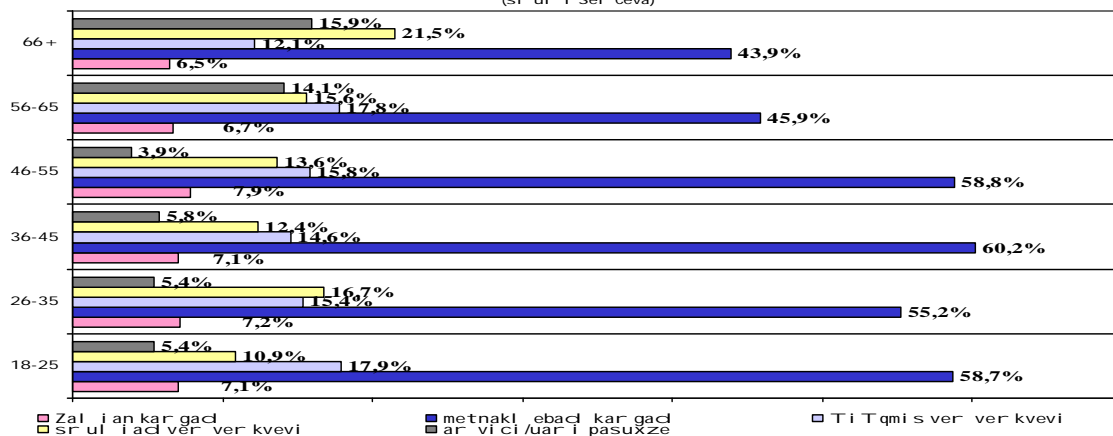
gamokiTxul Ta umetesobam icis rom arCevnebiSi mTavar rol s moqal aqeebi TamaSoben, magram Sereuli pasuxebis simravle miuTiTebS, rom gamokiTxul ebiS codna met informirebul obas moiTxovs (sruli SerCeva)



gamokiTxul Ta TviTsefaseba, Tu ramdenad kargad erkveian qveynis saarCevno kanonmdebl obaSi, saSual oze maRali dadebiti macvenebl iT gamoixata - 62.5%.

gamokiTxul Ta TviTsefaseba, Tu ramdenad kargad erkveian qveynis saarCevno kanonmdebl obaSi, asakobriv Wril Si, erTgvarovan macvenebl ebs iZi eva – yovel asakobriv j gufSi, saSual od gamokiTxul Ta mxlod mesamedi ambobs, rom ver erkvea kanonmdebl obaSi. somex da azerbaijanul eTnikur j gufebSi gamokiTxul Ta TiTqmis mesamedi ambobs, rom kanonmdebl obaSi ver erkvea.

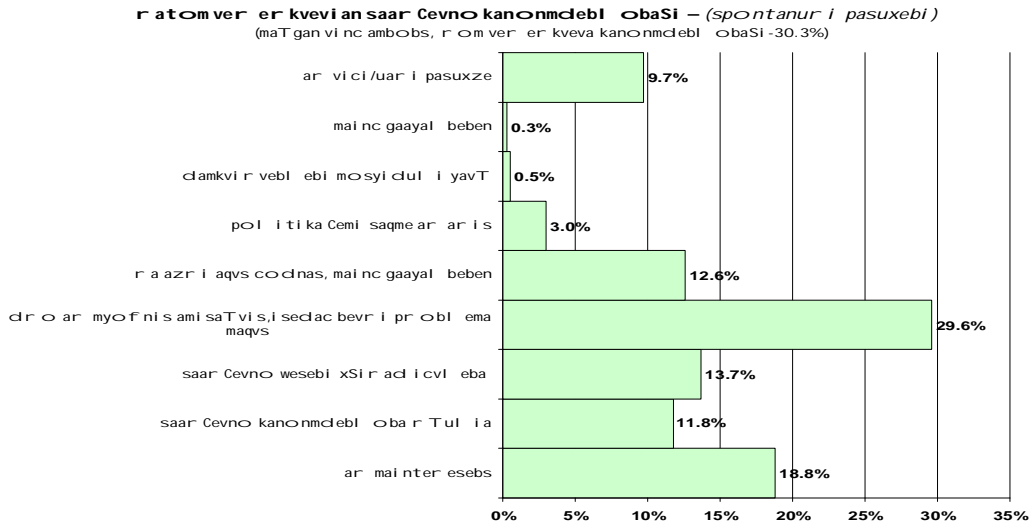
gamokiTxul Ta TviTsefaseba, Tu ramdenad kargad erkveian qveynis saarCevno kanonmdebl obaSi, asakobriv Wril Si, erTgvarovan macvenebl ebs iZi eva – yovel asakobriv j gufSi, saSual od gamokiTxul Ta mesamedi, kanonmdebl obaSi ver erkvea (sruli SerCeva)



ISFED

samarTI i ani arCevnebi sa da demokratiis saerTaSoriso sazogadoeba

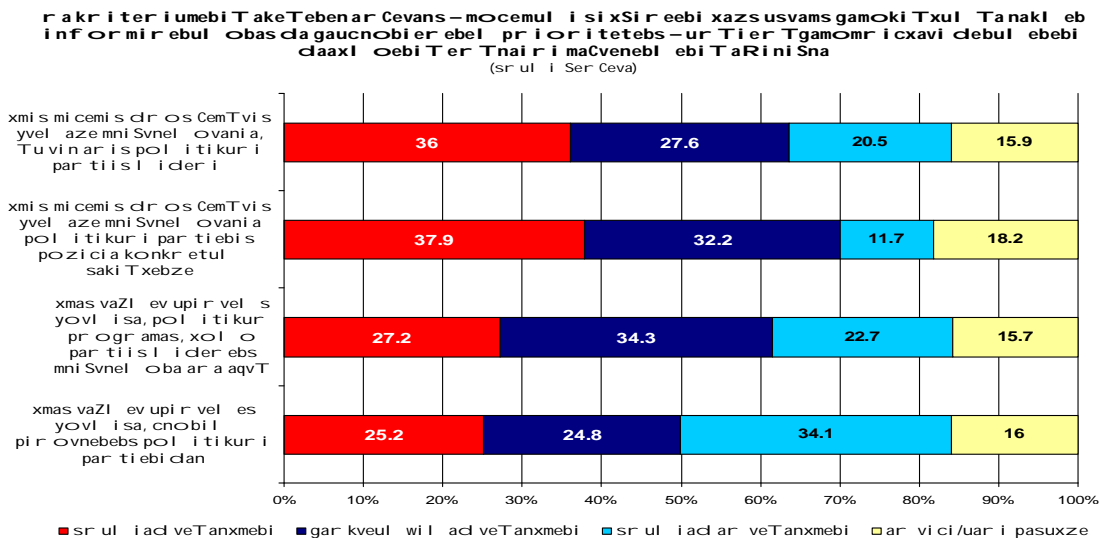
რატომ ვერ ერკვიან საარჩევნო კანონმდებლ ობაჲსი – (spontanური pasuxebi. maTgan vinc ambobs, rom ver erkveva kanonmdებლ ობაჲსი- 30.3%-დან).



რა კრიტერიუმები თაკე თებენ არჩევანს (სრული სერცევა).

მომცემული სიხშირეები ხაზს უსვამს გამოკითხულთა ნაქლები ინფორმირებულ ობაჲსა და გაუცნობიერებელ პრიორიტეტებს – ურთერთგამომრიცხავი დებულებები დაქლები ტერმინური მაცნობილები თარიღისა, მხოლოდ პარტიების პოზიცია კონკრეტულ საკითხებთან მიმართებაში თარიღისა განსხვავებულები დაბალი მაცნობილები – 11.7%.

ასეთივე სურათია შემდეგ ცხრილშიც:

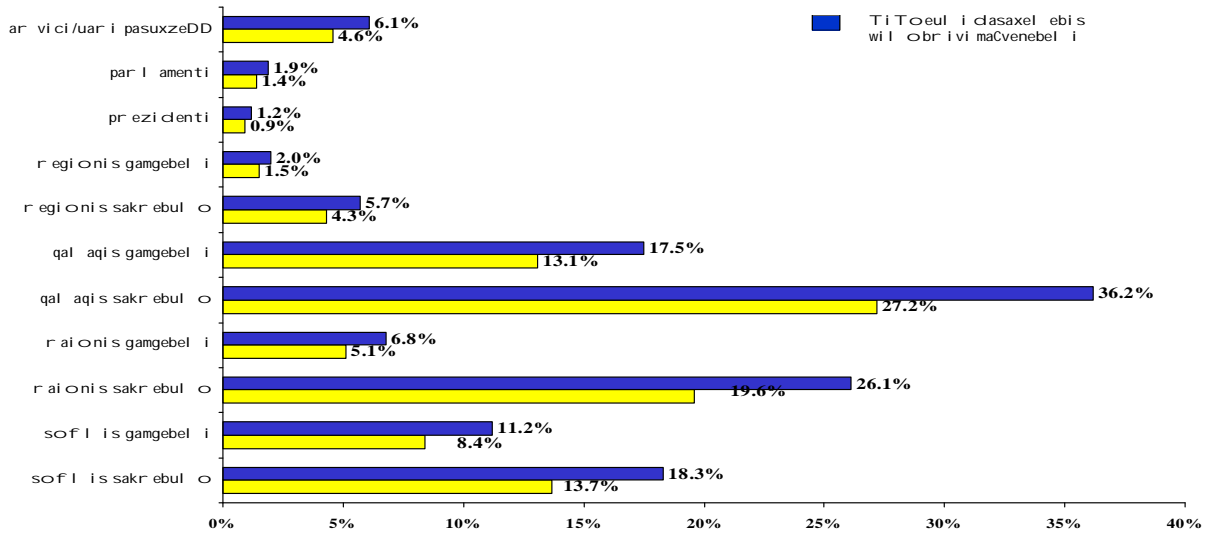


ISFED

samarTl i ani arCevnebi sa da demokrati is saerTaSor is so sazogadoeba

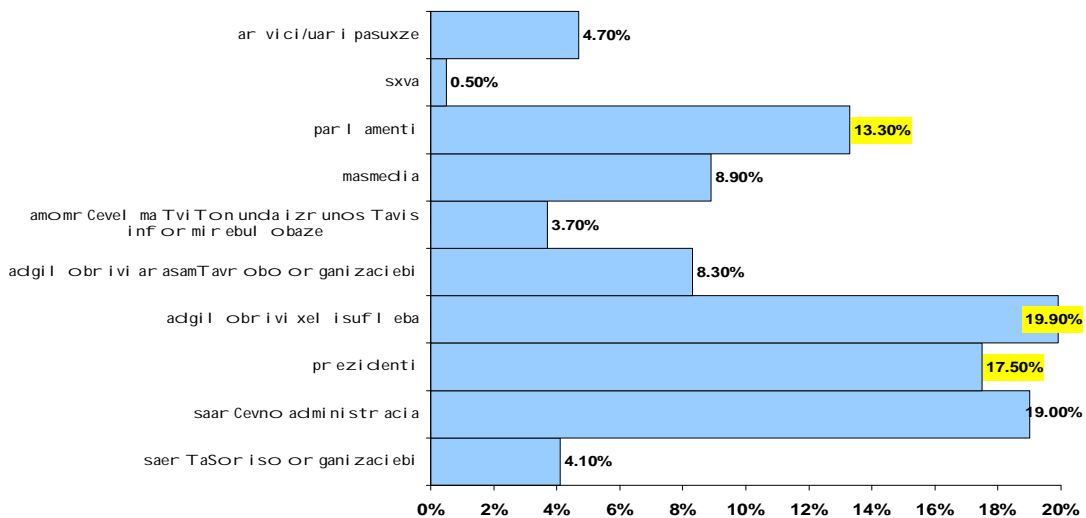
vin airCies 2010 wl is adgil obriv arCevnebsi (srul i SerCeva).

vin airCies 2010 wl is adgil obriv arCevnebsi – pasuxebis nair gvar obami uTi Tebs gamoki Txul Ta ar ainfor mirebul obaze (srul i SerCeva)



respondentTa umetesobas miaCnia, rom mosaxl eobis informirebul obaze xel isufleba da prezidentia pasuxismgebeli (srul i SerCeva).

respondentTa umetesobas miaCni a, rom mosaxl eobis informirebul obaze xel isufleba da prezidentia pasuxismgebeli (srul i SerCeva)



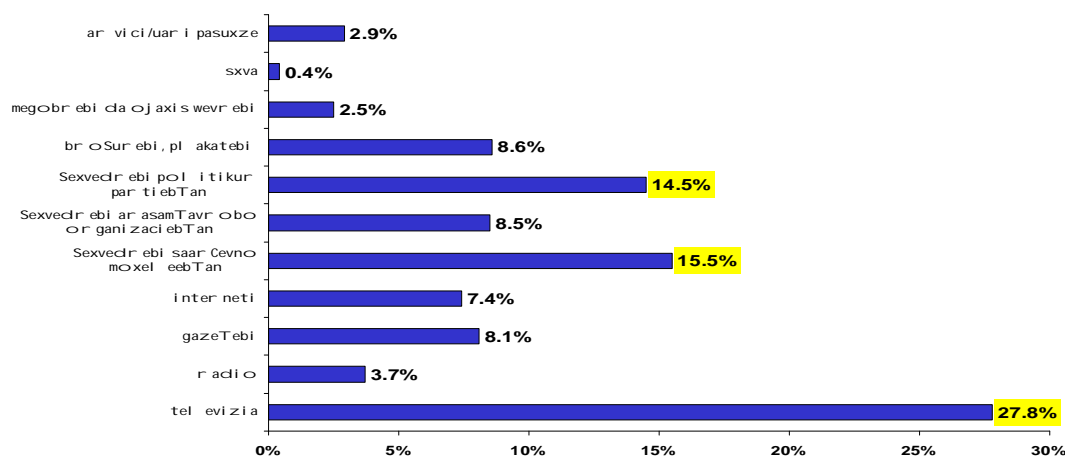
ISFED

samarTli ani arCevnebi sa da demokratiis saerTaSoriso sazogadoeba

saukeTeso gza amomrCeval Ta ganaTI ebisaTvis. (srul i SerCeva)

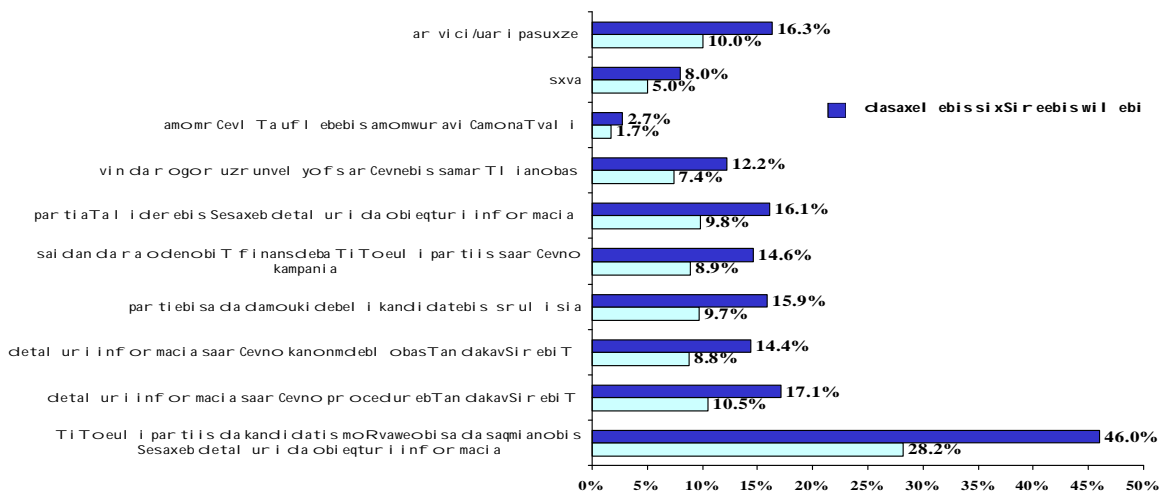
yvel aze maRal i maCvenebl ebiT dasaxel da: - tel evizia 27.8%, Sexvedrebi saarCevno moxel eebTan 15.5%, Sexvedrebi pol itikur partiebTan 14.5%, Sexvedrebi arasamTavrobo organizaciebTan 8.5%, broSurebi, pl akatebi 8.6%, gazeTebi 8.1% da sxva.

saukeTeso gza amomrCeval Ta ganaTI ebisaTvis.
(srul i SerCeva)



kiTxvaze, Tu ra saxis informaciis miRebas isurvebdnen momaval i arCevnebis Sesaxeb – yvel aze maRal i sixSiriT TiToeul i partiis da kandidatis moRvaweobisa da saqmi anobis Sesaxeb detal uri da obieqturi informacia dasaxel da 46.0%-iani dasaxel ebis wil obrivi maCvenebl iT.

kiTxvaze, Tu ra saxis informaciis miRebas isurvebdnen momaval i arCevnebis Sesaxeb – yvel aze maRal i sixSiriT TiToeul i partiis da kandidatis moRvaweobisa da saqmi anobis Sesaxeb detal uri da obieqturi informacia dasaxel da
(srul i SerCeva)

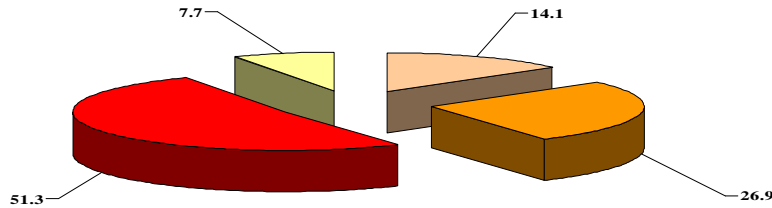


ISFED

samarTl i ani arCevnebi sa da demokratiis saerTaSoriso sazogadoeba

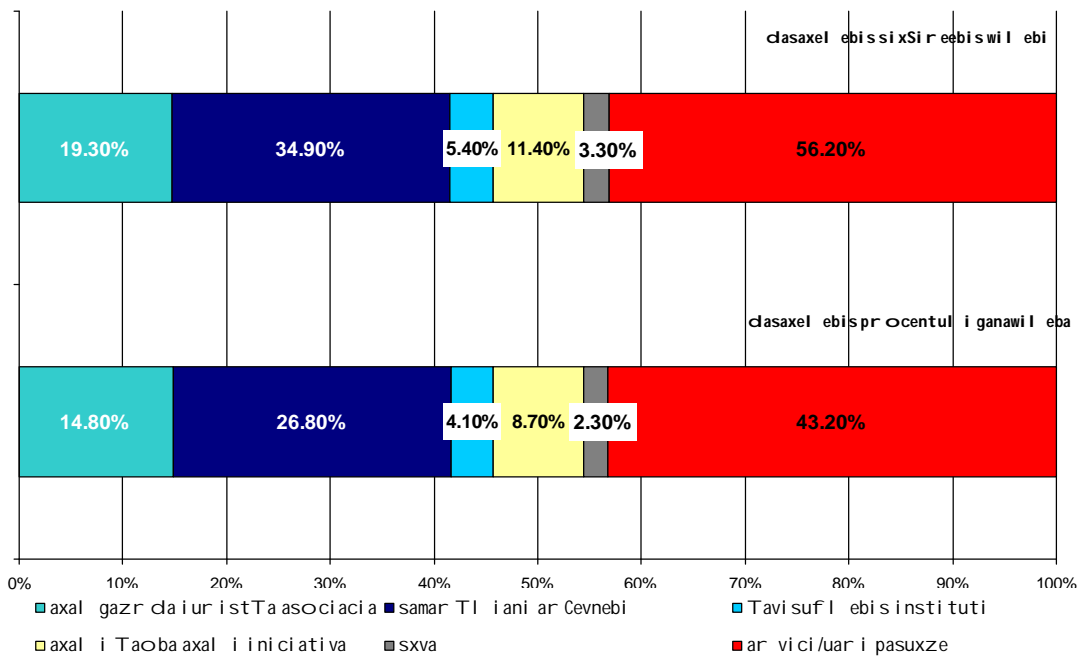
gamokiTxul Ta umetesoba - 51.3% (srul i SerCeva) aRniSnavs, rom erkveva adgil obrivi TviTmmarTvel obis ufl ebebsa da moval eobebSi

gamokiTxul Ta umetesoba aRniSnavs, rom adgil obrivi TviTmmarTvel obis ufl ebebsa da moval eobebSi er kveva (sr ul i Ser Ceva)



kiTxvaze, Tu romel i qarTul i arasamTavrobo organizaciebi akvirdebian arCevnebs, gamokiTxul Ta TiTqmis naxevarma pasuxi ver gasca (srul i SerCeva-spontanuri pasuxebi)

kiTxvaze, Tu romel i qarTul i arasamTavrobo organizaciebi akvirdebian arCevnebs, gamokiTxul Ta TiTqmis naxevarma pasuxi ver gasca (srul i SerCeva-spontanuri pasuxebi)

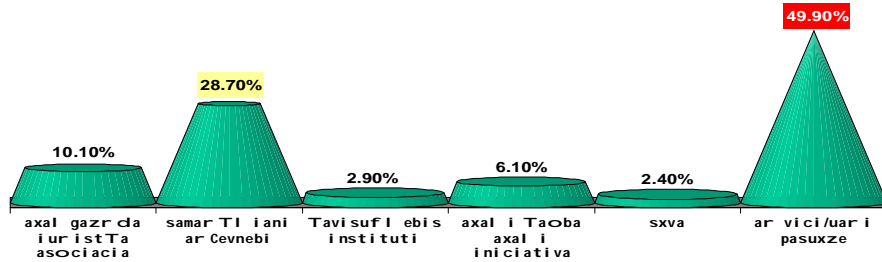


ISFED

samarTI iani arCevnebi sa da demokratiis saerTaSoriso sazogadoeba

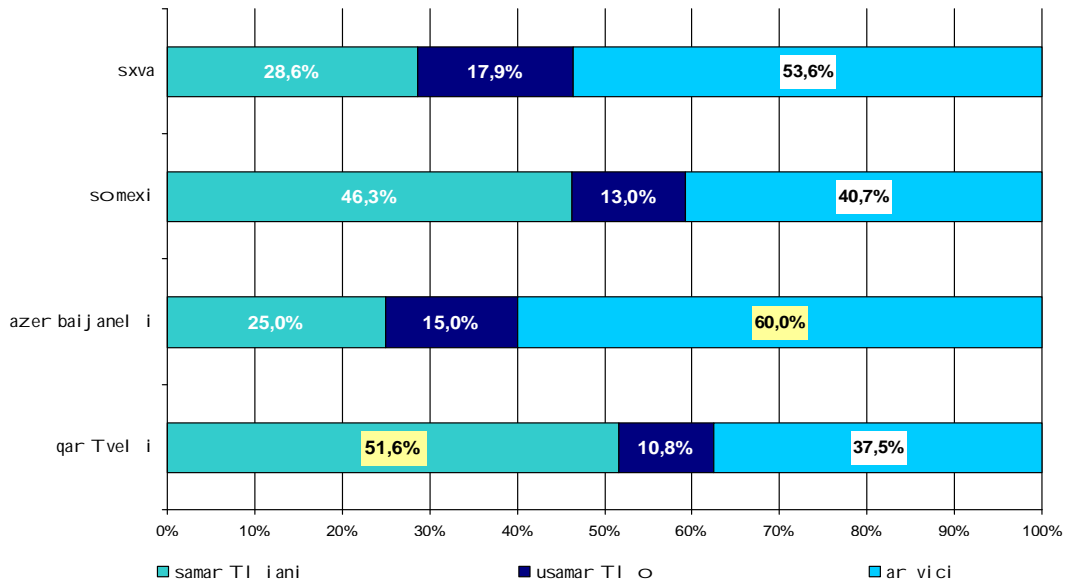
romel qarTul sadamkvirvebi o arasamTavrobo organizaciebs endobian yvel aze metad, gamokiTxul Ta TiTqmis mesamedma dadebiTi pasuxiT "samarTI iani arCevnebi" daasaxel a (srul i SerCeva-spontanuri pasuxebi)

kiTxvaze, Tu romel qarTul sadamkvirvebi o arasamTavrobo organizaciebs endobian yvel aze metad, gamokiTxul Ta TiTqmis mesamedma dadebiTi pasuxiT samarTI iani arCevnebi daasaxel a (srul i SerCeva-spontanuri pasuxebi)



mol odini momaval i arCevnebis mimarT erovnebaTa Wril Si ase gamoixata – azerbaijanuli eTnikuri jgufis gamokiTxul ebis umetesoba ver gansazRvavs, ramdenad samarTI iani iqneba arCevnebi momaval Si. gamokiTxul qarTvel Ta umetesoba ki optimisturad afasebs momavals, asakobriv Wril Si ki mol odinebi gansxvavebul monacemebs TiTqmis arizi eva – gamokiTxul ebi asakis miuxedavad gansxvavebul damokidebul ebeps ar amJRavneben.

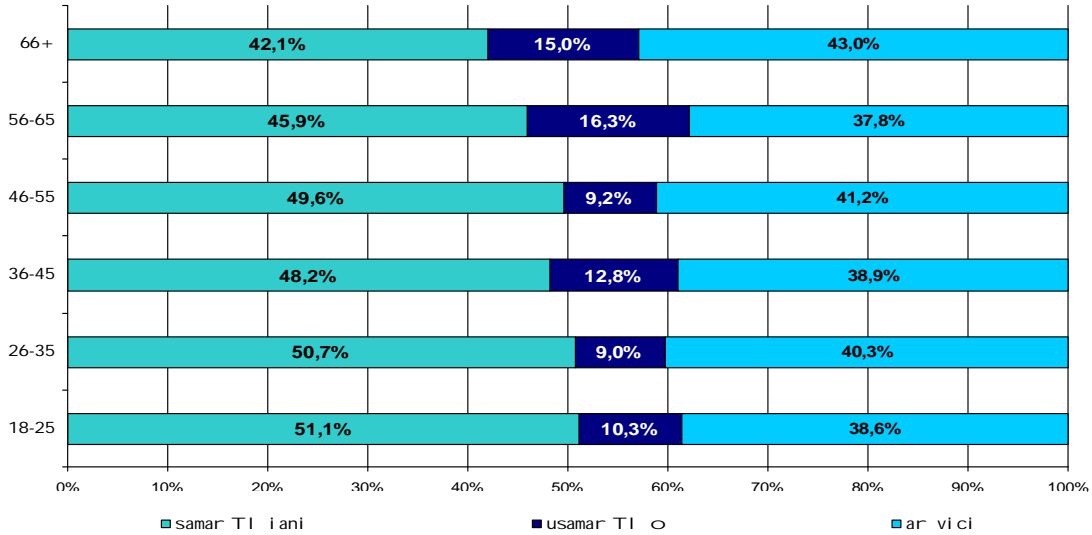
mol odini momaval i arCevnebis mimarT erovnebaTa Wril Si ase gamoixata – azerbaijanuli eTnikuri jgufis gamokiTxul ebis umetesoba ver gansazRvavs, ramdenad samarTI iani iqneba arCevnebi momaval Si. gamokiTxul qarTvel Ta umetesobaki optimisturad afasebs momavals (srul i SerCeva)



ISFED

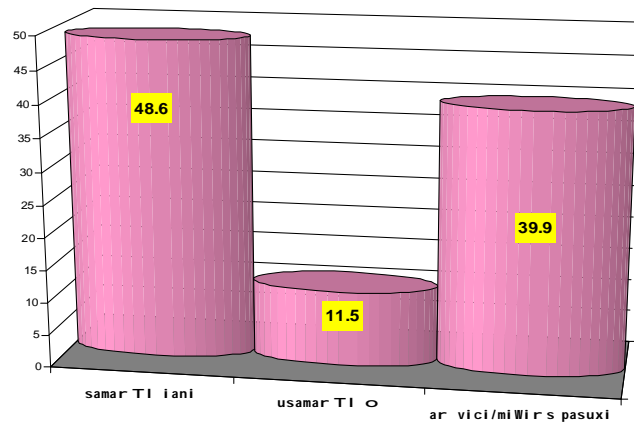
samar TI i ani ar Cevnebi sa da demokrati is saer Ta Sor i so sazogadoeba

mol odini momaval i ar Cevnebi s amar TI i anobi s mi mar T asakobr iv Wr i l Si gansxvavebul monacemeb s Ti T qmi s ar i ZI eva – gamoki Txul ebi asaki s da mi uxedavad gansxvavebul damoki debul ebebs ar am JRavneben
(sr ul i Ser Ceva)



mi uxedavad imisa, rom gamoki Txul Ta 88% ndobas ar gamoxatavs saar Cevno garemos mi mar T. am ku Tx iT mol odini momaval i ar Cevnebi s Tvis optimisturia (sr ul i Ser Ceva)

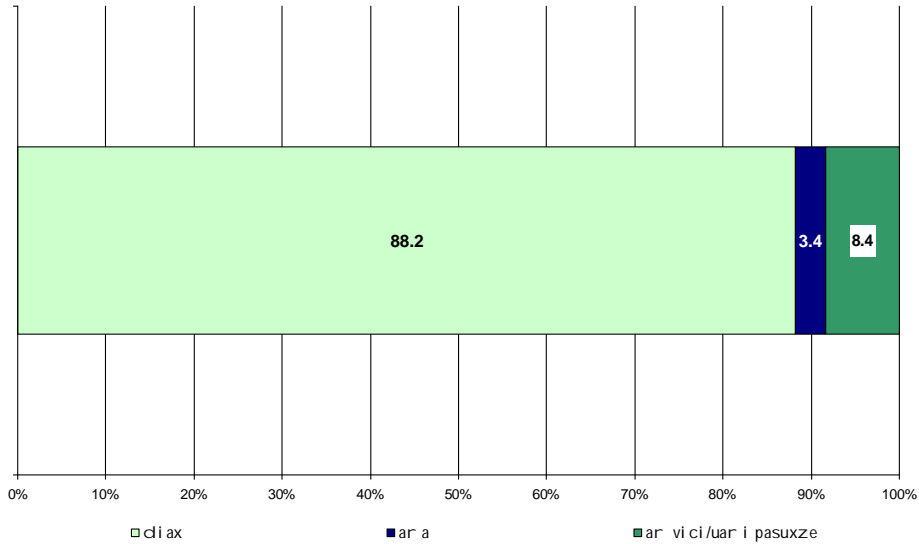
mi uxedavad imisa, rom gamoki Txul Ta 88% ndobas ar gamoxatavs saar Cevno gar emos mi mar T, mol odini momaval i ar Cevnebi s mi mar T optimisturia
(sr ul i Ser Ceva)



ISFED

samarTl iani arCevnebi sa da demokratiis saerTasori so sazogadoeba

88.2% mi iCnevs rom, arCevnebze dmkviri vebi ebi s dasweba saWi roa
(sruli SerCeva)



miRebul i Sedegebis safuZvel ze Segvizi ia gavakeToT Semdegi daskvnebi:

1. gamokitxul regionebsi mosaxl eobis informirebul obis done saarCevno kanonmdebl obasTan dakavSirebit moitxovs meti informaciis miwodebas. gansakutrebit, Casatarebel ia samusaoebi somex da azerbaijanel eTnikur jgufebTan, ara mxol od saarCevno kanonmdebl obis ukeT gacnobis Tval sazrisiT, aramed zogadad arCevnebis mniSvnel ovnebis rolis asamaRl ebl ad;
2. arCevnebsi monawil eobis miRebis mniSvnel obas mosaxl eoba bol omde ver acnobierebs, SesamCnevia informirebul obis nakleoba da misi, rogorc amomrCevlis qceva ganpirobepul ia mxol od garkveul i ganwyobebiT;
3. saarCevno administraciisadmi da miRebul i Sedegebisadmi ndobis xasiaTi farul tendenciebs atarebs - nihil izmi da ormagi damokidebul ebebi;
4. arsebobs samarTl ebrivad - arCevnebis gziT probl emebis gadawyvetis mzaoba;
5. saWi roa garkveul i RonisZieebis gatareba arasamTavrobo organizaciebis rolis Sesaxeb cnobadobis gazrdisaTvis;
6. spontanurad dasaxel ebul arasamTavrobo organizaciaTa siaSi, yvel aze maRal i macvenebl eb iT "samarTl iani arCevnebi" gamoirCeva, rac dadebiti faqtoria Cveni organizaciis mier daarsebidan (1995 wl idan) dRemde qveyanaSi mimdinare saarCevno procedurebisa da procesebis Sesaxeb sazogadoebisaTvis Catarebul i sxvadasxva xasiaTis sainformacio RonisZieebis momaval Sic ganxorciel ebisaTvis.

D